

The Trucks Are Coming to Atlantic County

3rd HIGHEST DELAY GROWTH

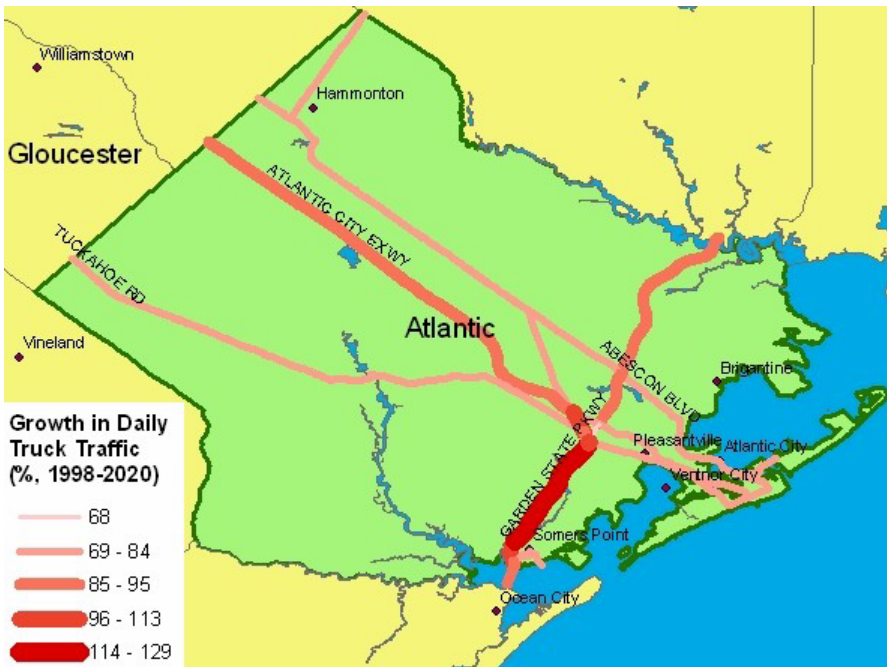
1998 daily truck VMT: 235,605	2002 truck fatalities: 5
2020 projected daily truck VMT: 435,290	Statewide rank: 7
Growth: 85%	2020 projected truck fatalities: 8
Statewide rank: 4	
1998 annual delay: 14 hours	2000 days of unhealthy air: 4
2020 projected annual delay: 110 hours	2002 days of unhealthy air: 13
Growth: 689%	Growth: 225%
Statewide rank: 3	Statewide rank: 6

Sources: VMT and annual delay figures are derived from FHWA's Freight Analysis Framework; 2002 fatalities are from NHTSA's Fatality Analysis Reporting System; 2020 fatalities are calculated using the 2002 figures and applying a growth factor based on FHWA VMT data; Air quality figures are from EPA's AirData system.

Roadways in Atlantic County projected to see the largest truck traffic growth

Roadway	1998 daily truck VMT	2020 projected daily truck VMT	Growth
Garden State Pkwy	11,824	23,302	97%
Atlantic City Expwy	67,199	125,460	87%
US-206	8,240	15,111	83%
US-30	29,410	53,935	83%
Abescon Blvd	28,288	51,878	83%

Source: derived from FHWA's Freight Analysis Framework.



Source: map generated from FHWA's Freight Analysis Framework.

Truck fatalities by roadway in Atlantic County

Roadway	2002 deaths
CR-651	1
Michigan Ave	1
Pennsylvania Ave	1
US-30	2

Source: NHTSA's Fatality Analysis Reporting System.

The Trucks Are Coming to Bergen County



1998 daily truck VMT: 670,274
 2020 projected daily truck VMT: 1,190,219
 Growth: 78%
 Statewide rank: 14

1998 annual delay: 45 hours
 2020 projected annual delay: 311 hours
 Growth: 590%
 Statewide rank: 18

2003 truck fatalities: 10
 Statewide rank: 2
 2020 projected truck fatalities: 16

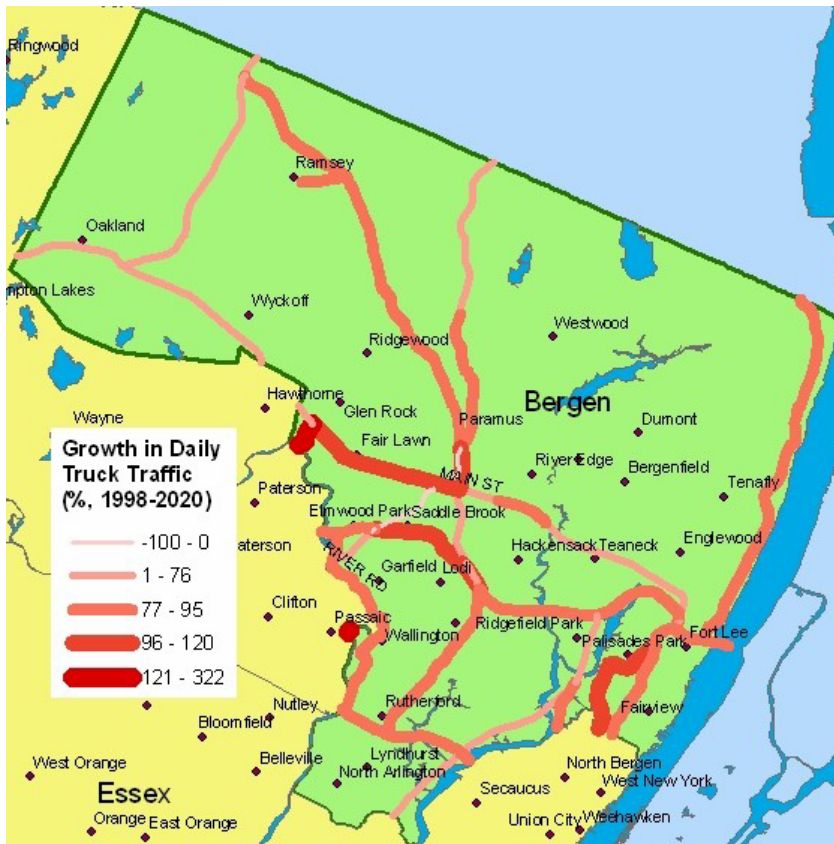
2000 days of unhealthy air: 18
 2002 days of unhealthy air: 16
 Growth: -11%
 Statewide rank: 20

Sources: VMT and annual delay figures are derived from FHWA's Freight Analysis Framework; 2002 fatalities are from NHTSA's Fatality Analysis Reporting System; 2020 fatalities are calculated using the 2002 figures and applying a growth factor based on FHWA VMT data; Air quality figures are from EPA's AirData system.

Roadways in Bergen County projected to see the largest truck traffic growth

Roadway	1998 daily truck VMT	2020 projected daily truck VMT	Growth
US-1	6,691	13,103	96%
I-80	83,387	161,037	93%
I-95	10,556	19,668	86%
River Rd	5,245	9,619	83%
Palisades Interstate Pkwy	41,470	75,949	83%

Source: derived from FHWA's Freight Analysis Framework.



Truck fatalities by roadway in Bergen County

Roadway	2002 deaths
I-80	1
New Jersey Tpke	3
SR-17	2
SR-3	1
SR-4	1
US-202	1
Westwood Ave	1

Source: NHTSA's Fatality Analysis Reporting System.

Source: map generated from FHWA's Freight Analysis Framework.

The Trucks Are Coming to Burlington County



1998 daily truck VMT: 732,507
 2020 projected daily truck VMT: 1,279,651
 Growth: 75%
 Statewide rank: 15

2003 truck fatalities: 9
 Statewide rank: 3
 2020 projected truck fatalities: 14

1998 annual delay: 7 hours
 2020 projected annual delay: 56 hours
 Growth: 681%
 Statewide rank: 6

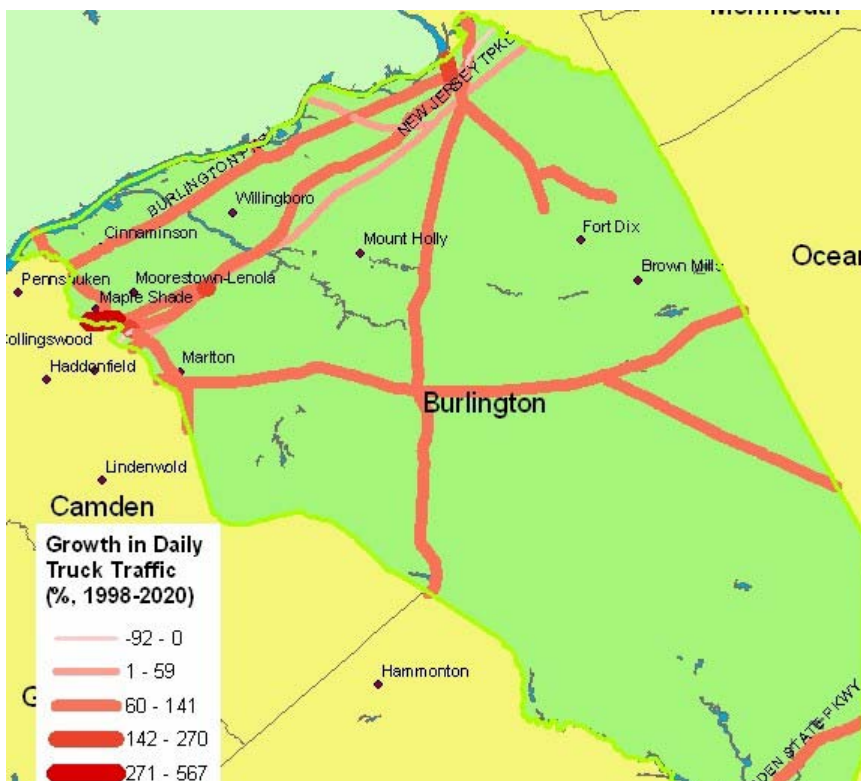
2000 days of unhealthy air: N/A
 2002 days of unhealthy air: N/A
 Growth: N/A
 Statewide rank: N/A

Sources: VMT and annual delay figures are derived from FHWA's Freight Analysis Framework; 2002 fatalities are from NHTSA's Fatality Analysis Reporting System; 2020 fatalities are calculated using the 2002 figures and applying a growth factor based on FHWA VMT data; Air quality figures are from EPA's AirData system.

Roadways in Burlington County projected to see the largest truck traffic growth

Roadway	1998 daily truck VMT	2020 projected daily truck VMT	Growth
Kaighn Ave	18,565	41,888	126%
I-295	175,722	395,199	125%
SR-73	47,453	95,250	101%
Burlington Pike	38,399	71,489	86%
SR-72	10,422	19,113	83%

Source: derived from FHWA's Freight Analysis Framework.



Truck fatalities by roadway in Burlington County

Roadway	2002 deaths
Garden State Pkwy	1
I-295	2
I-700	2
New Jersey Tpke	1
Pemberton-Browns Mill	1
SR-73	1
US-206	1

Source: NHTSA's Fatality Analysis Reporting System.

Source: map generated from FHWA's Freight Analysis Framework.

The Trucks Are Coming to Camden County

10th HIGHEST DELAY GROWTH

1998 daily truck VMT: 442,865
2020 projected daily truck VMT: 793,278
Growth: 79%
Statewide rank: 12

2003 truck fatalities: 1
Statewide rank: 15
2020 projected truck fatalities: 2
2000 days of unhealthy air: 9
2002 days of unhealthy air: 21
Growth: 133%
Statewide rank: 11

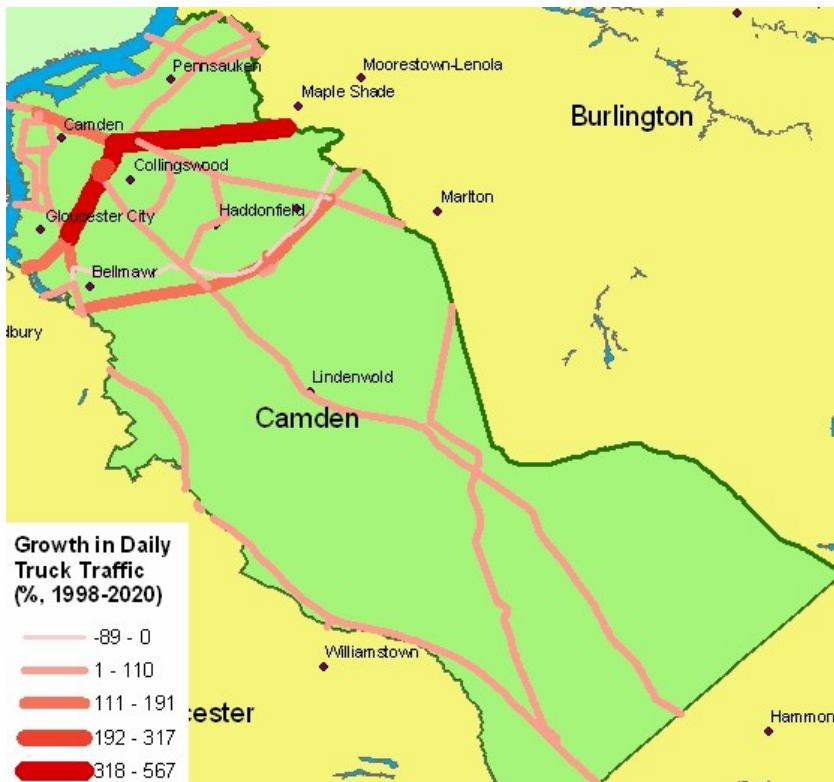
1998 annual delay: 9 hours
2020 projected annual delay: 69 hours
Growth: 650%
Statewide rank: 10

Sources: VMT and annual delay figures are derived from FHWA's Freight Analysis Framework; 2002 fatalities are from NHTSA's Fatality Analysis Reporting System; 2020 fatalities are calculated using the 2002 figures and applying a growth factor based on FHWA VMT data; Air quality figures are from EPA's AirData system.

Roadways in Camden County projected to see the largest truck traffic growth

Roadway	1998 daily truck VMT	2020 projected daily truck VMT	Growth
Kaighn Ave	7,314	47,473	549%
Crescent Blvd	9,309	40,158	331%
New Jersey Tpke	57,181	135,351	137%
Burlington Pike	8,668	17,749	105%
I-676	29,553	59,114	100%

Source: derived from FHWA's Freight Analysis Framework.



Source: map generated from FHWA's Freight Analysis Framework.

Truck fatalities by roadway in Camden County

Roadway	2002 deaths
River Rd	1

Source: NHTSA's Fatality Analysis Reporting System.

The Trucks Are Coming to Cape May County



1998 daily truck VMT: 57,656
 2020 projected daily truck VMT: 107,056
 Growth: 86%
 Statewide rank: 3

1998 annual delay: 0 hours
 2020 projected annual delay: 1 hour
 Growth: 607%
 Statewide rank: 15

2003 truck fatalities: 0
 Statewide rank: 18
 2020 projected truck fatalities: 0

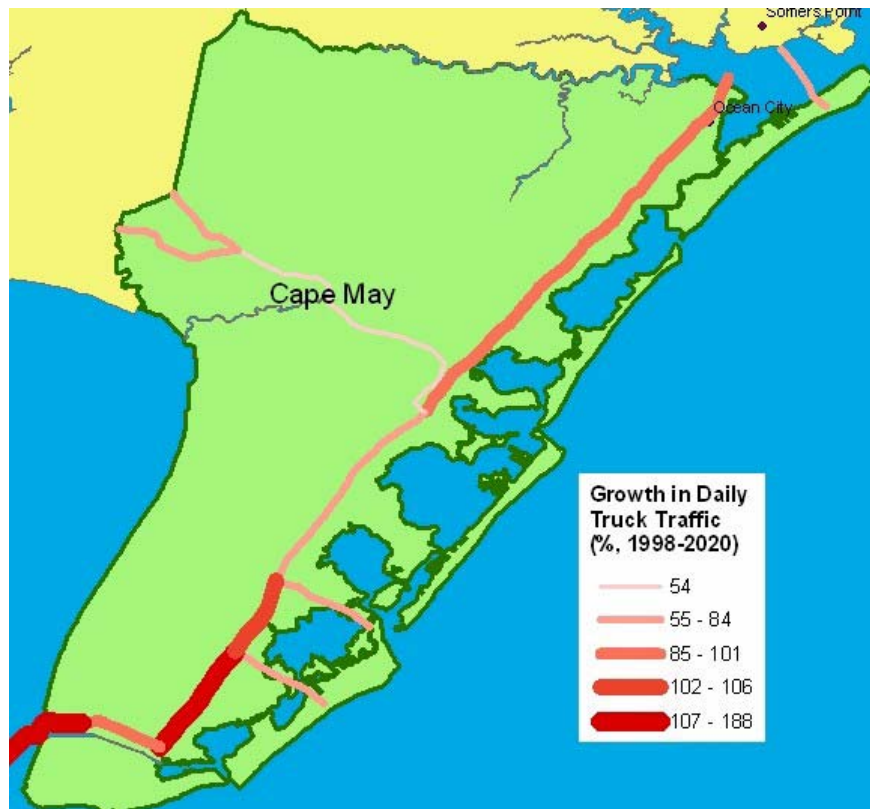
2000 days of unhealthy air: N/A
 2002 days of unhealthy air: N/A
 Growth: N/A
 Statewide rank: N/A

Sources: VMT and annual delay figures are derived from FHWA's Freight Analysis Framework; 2002 fatalities are from NHTSA's Fatality Analysis Reporting System; 2020 fatalities are calculated using the 2002 figures and applying a growth factor based on FHWA VMT data; Air quality figures are from EPA's AirData system.

Roadways in Cape May County projected to see the largest truck traffic growth

Roadway	1998 daily truck VMT	2020 projected daily truck VMT	Growth
Garden State Pkwy	23,651	46,081	95%
SR-47	14,384	25,595	78%
SR-47 A	5,644	9,720	72%

Source: derived from FHWA's Freight Analysis Framework.



Source: map generated from FHWA's Freight Analysis Framework.

The Trucks Are Coming to Cumberland County

**2nd HIGHEST
AIR POLLUTION
GROWTH**

1998 daily truck VMT: 102,447
2020 projected daily truck VMT: 171,314
Growth: 67%
Statewide rank: 21

1998 annual annual delay: 0 hours
2020 projected annual annual delay: 1 hour
Growth: 674%
Statewide rank: 7

2003 truck fatalities: 0
Statewide rank: 18
2020 projected truck fatalities: 0

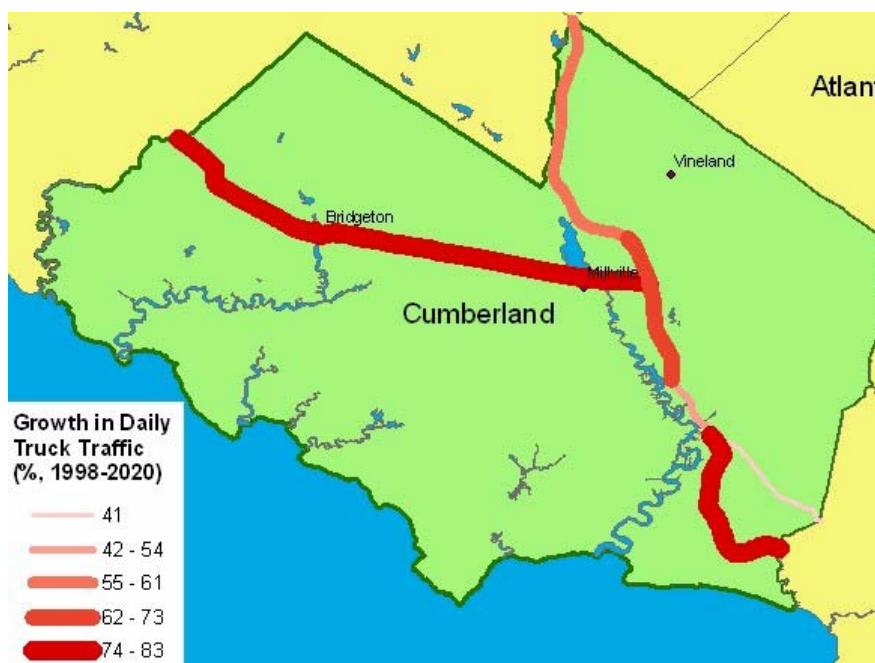
2000 days of unhealthy air: 2
2002 days of unhealthy air: 18
Growth: 800%
Statewide rank: 2

Sources: VMT and annual delay figures are derived from FHWA's Freight Analysis Framework; 2002 fatalities are from NHTSA's Fatality Analysis Reporting System; 2020 fatalities are calculated using the 2002 figures and applying a growth factor based on FHWA VMT data; Air quality figures are from EPA's AirData system.

Roadways in Cumberland County projected to see the largest truck traffic growth

Roadway	1998 daily truck VMT	2020 projected daily truck VMT	Growth
Millville Bridgeton Pike	5,189	9,516	83%
SR-49	12,503	22,930	83%
SR-47	8,198	14,352	75%
SR-55	71,952	117,415	63%

Source: derived from FHWA's Freight Analysis Framework.



Source: map generated from FHWA's Freight Analysis Framework.

The Trucks Are Coming to Essex County

**5th HIGHEST
AIR POLLUTION
GROWTH**

1998 daily truck VMT: 489,391
 2020 projected daily truck VMT: 869,374
 Growth: 78%
 Statewide rank: 13

2003 truck fatalities: 4
 Statewide rank: 9
 2020 projected truck fatalities: 6

1998 annual delay: 52 hours
 2020 projected annual delay: 341 hours
 Growth: 553%
 Statewide rank: 21

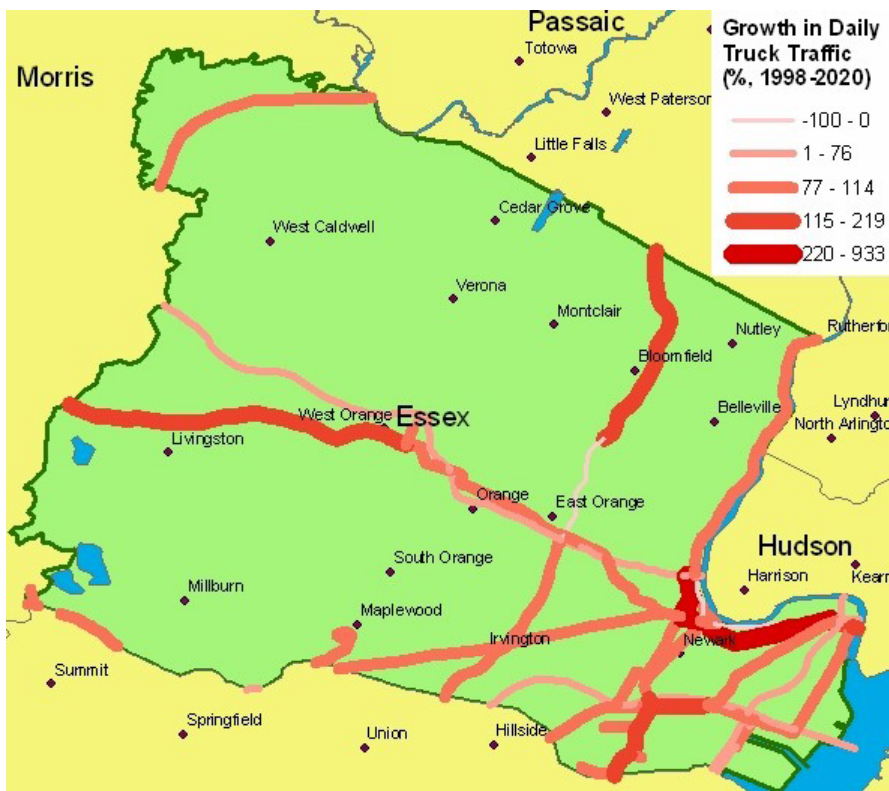
2000 days of unhealthy air: 3
 2002 days of unhealthy air: 10
 Growth: 233%
 Statewide rank: 5

Sources: VMT and annual delay figures are derived from FHWA's Freight Analysis Framework; 2002 fatalities are from NHTSA's Fatality Analysis Reporting System; 2020 fatalities are calculated using the 2002 figures and applying a growth factor based on FHWA VMT data; Air quality figures are from EPA's AirData system.

Roadways in Essex County projected to see the largest truck traffic growth

Roadway	1998 daily truck VMT	2020 projected daily truck VMT	Growth
Spring St	8,754	19,264	120%
SR-21	10,987	22,460	104%
I-80	62,057	122,482	97%
US-1	29,554	57,961	96%
US-22	7,906	15,392	95%

Source: derived from FHWA's Freight Analysis Framework.



Truck fatalities by roadway in Essex County

Roadway	2002 deaths
New Jersey Tpke	1
Main St	2
US-1&9	1

Source: NHTSA's Fatality Analysis Reporting System.

Source: map generated from FHWA's Freight Analysis Framework

The Trucks Are Coming to Gloucester County

4th HIGHEST DELAY GROWTH

1998 daily truck VMT: 412,735
 2020 projected daily truck VMT: 714,369
 Growth: 73%
 Statewide rank: 16

2003 truck fatalities: 1
 Statewide rank: 15
 2020 projected truck fatalities: 2

1998 annual delay: 5 hours
 2020 projected annual delay: 40 hours
 Growth: 689%
 Statewide rank: 4

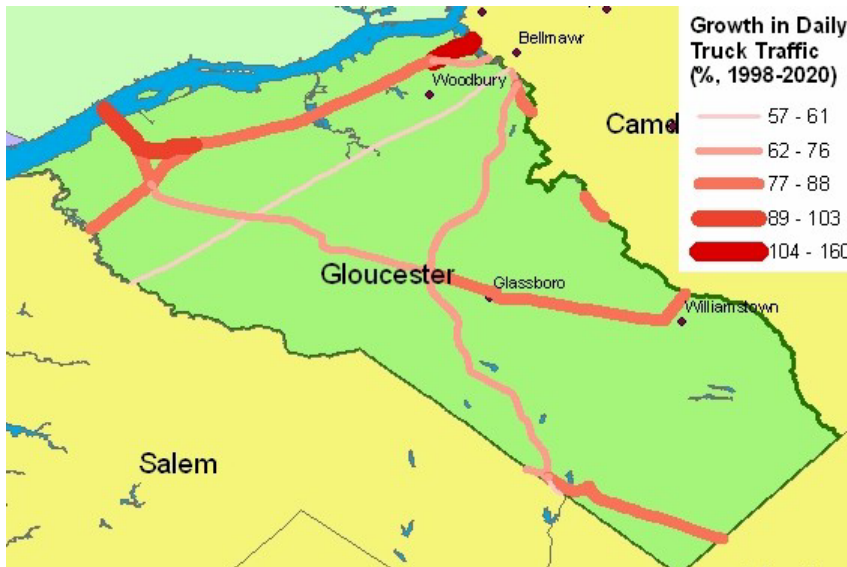
2000 days of unhealthy air: 5
 2002 days of unhealthy air: 13
 Growth: 160%
 Statewide rank: 8

Sources: VMT and annual delay figures are derived from FHWA's Freight Analysis Framework; 2002 fatalities are from NHTSA's Fatality Analysis Reporting System; 2020 fatalities are calculated using the 2002 figures and applying a growth factor based on FHWA VMT data; Air quality figures are from EPA's AirData system.

Roadways in Gloucester County projected to see the largest truck traffic growth

Roadway	1998 daily truck VMT	2020 projected daily truck VMT	Growth
I-295	135,935	247,233	82%
SR-42	6,681	12,064	81%
US-40	13,330	23,937	80%
US-322	39,004	68,839	76%
SR-55	113,435	192,015	69%

Source: derived from FHWA's Freight Analysis Framework.



Source: map generated from FHWA's Freight Analysis Framework.

Truck fatalities by roadway in Gloucester County

Roadway	2002 deaths
Delsea Dr	1

Source: NHTSA's Fatality Analysis Reporting System.

The Trucks Are Coming to Hudson County

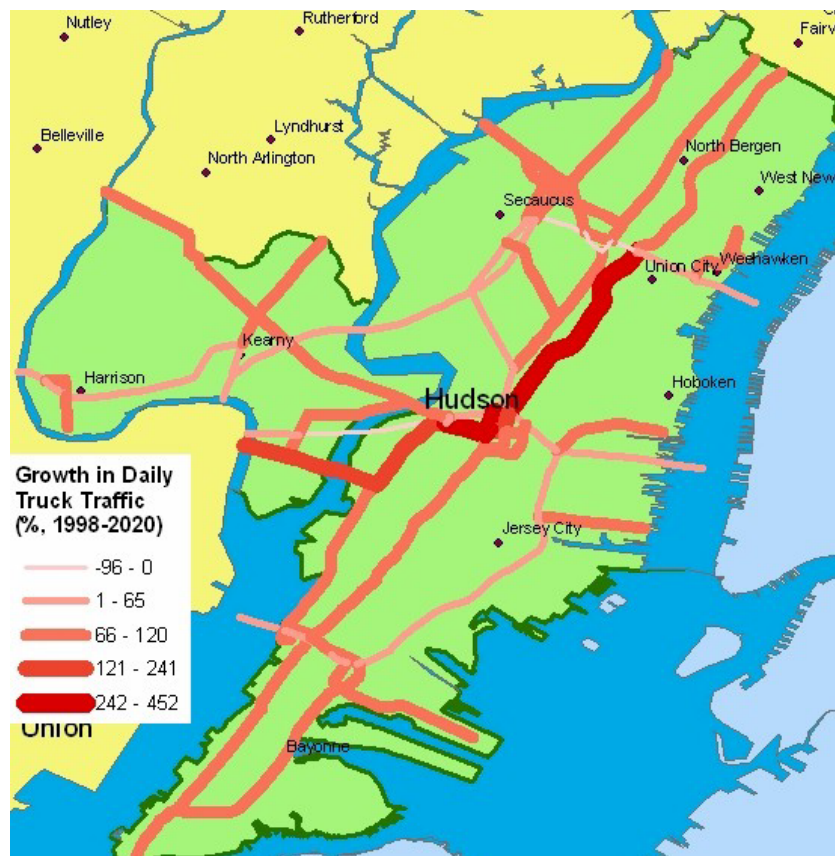
1998 daily truck VMT: 338,195	2003 truck fatalities: 0
2020 projected daily truck VMT: 575,299	Statewide rank: 18
Growth: 70%	2020 projected truck fatalities: 0
Statewide rank: 19	
1998 annual delay: 19 hours	2000 days of unhealthy air: 4
2020 projected annual delay: 124 hours	2002 days of unhealthy air: 7
Growth: 562%	Growth: 75%
Statewide rank: 19	Statewide rank: 13

Sources: VMT and annual delay figures are derived from FHWA's Freight Analysis Framework; 2002 fatalities are from NHTSA's Fatality Analysis Reporting System; 2020 fatalities are calculated using the 2002 figures and applying a growth factor based on FHWA VMT data; Air quality figures are from EPA's AirData system.

Roadways in Hudson County projected to see the largest truck traffic growth

Roadway	1998 daily truck VMT	2020 projected daily truck VMT	Growth
JF Kennedy Blvd	14,489	40,539	180%
Raymond Blvd	8,022	21,039	162%
SR-440	14,443	31,358	117%
Belleville Tpke	7,026	13,113	87%
SR-3	20,416	35,060	72%

Source: derived from FHWA's Freight Analysis Framework.



Source: map generated from FHWA's Freight Analysis Framework.

The Trucks Are Coming to Hunterdon County

8th HIGHEST DELAY GROWTH

1998 daily truck VMT: 255,361
 2020 projected daily truck VMT: 434,294
 Growth: 70%
 Statewide rank: 20

1998 annual delay: 9 hours
 2020 projected annual delay: 66 hours
 Growth: 672%
 Statewide rank: 8

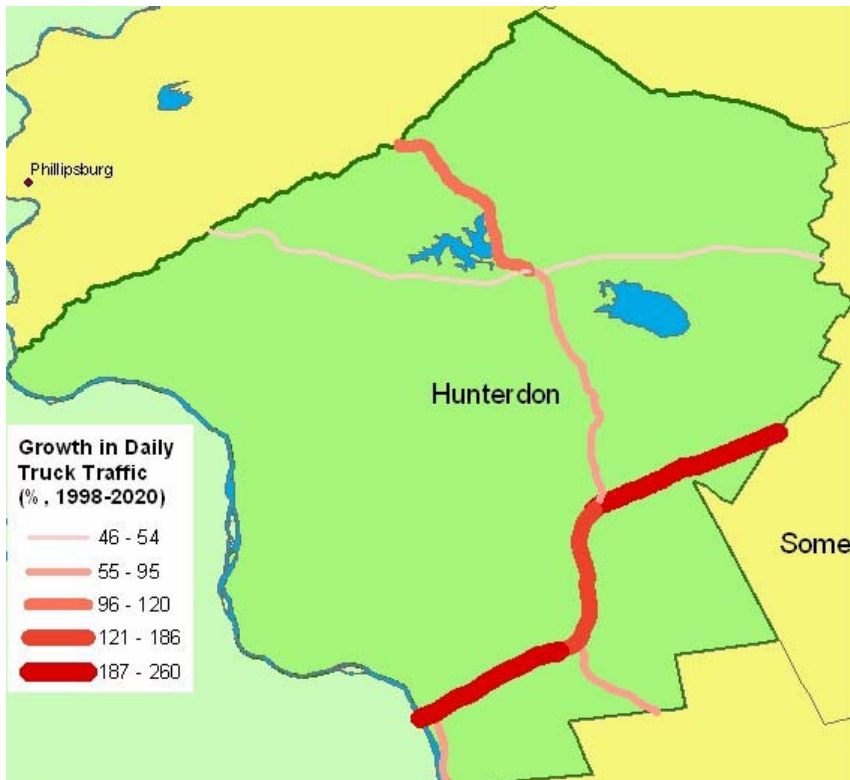
2003 truck fatalities: 3
 Statewide rank: 10
 2020 projected truck fatalities: 5
 2000 days of unhealthy air: 7
 2002 days of unhealthy air: 17
 Growth: 143%
 Statewide rank: 9

Sources: VMT and annual delay figures are derived from FHWA's Freight Analysis Framework; 2002 fatalities are from NHTSA's Fatality Analysis Reporting System; 2020 fatalities are calculated using the 2002 figures and applying a growth factor based on FHWA VMT data; Air quality figures are from EPA's AirData system.

Roadways in Hunterdon County projected to see the largest truck traffic growth

Roadway	1998 daily truck VMT	2020 projected daily truck VMT	Growth
US-202	22,124	64,904	193%
SR-31	39,347	77,482	97%
I-78	188,941	282,262	49%

Source: derived from FHWA's Freight Analysis Framework.



Source: map generated from FHWA's Freight Analysis Framework.

Truck fatalities by roadway in Hunterdon County

Roadway	2002 deaths
I-78	2
US-22	1

Source: NHTSA's Fatality Analysis Reporting System.

The Trucks Are Coming to Mercer County



1998 daily truck VMT: 578,981
 2020 projected daily truck VMT: 1,067,869
 Growth: 84%
 Statewide rank: 5

1998 annual delay: 8 hours
 2020 projected annual delay: 62 hours
 Growth: 672%
 Statewide rank: 9

2003 truck fatalities: 6
 Statewide rank: 5
 2020 projected truck fatalities: 10

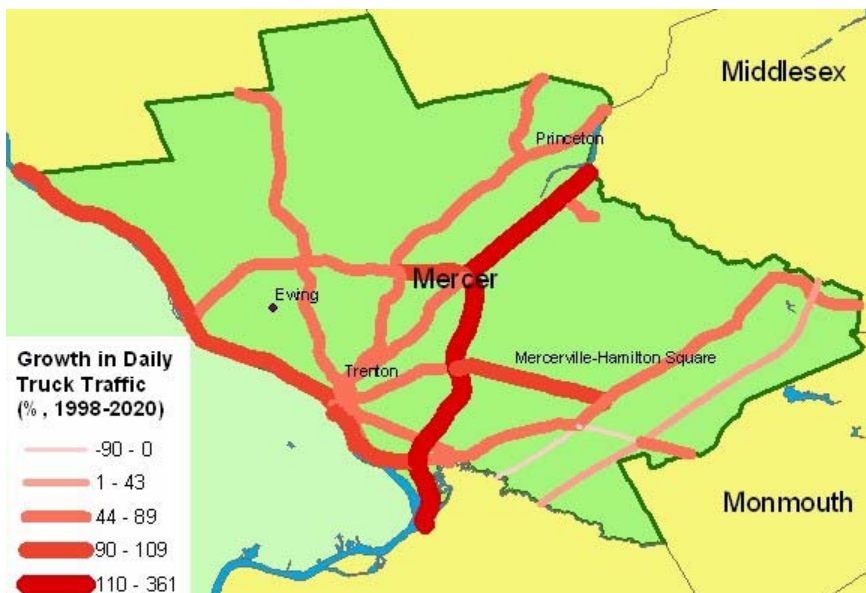
2000 days of unhealthy air: 11
 2002 days of unhealthy air: 20
 Growth: 82%
 Statewide rank: 12

Sources: VMT and annual delay figures are derived from FHWA's Freight Analysis Framework; 2002 fatalities are from NHTSA's Fatality Analysis Reporting System; 2020 fatalities are calculated using the 2002 figures and applying a growth factor based on FHWA VMT data; Air quality figures are from EPA's AirData system.

Roadways in Mercer County projected to see the largest truck traffic growth

Roadway	1998 daily truck VMT	2020 projected daily truck VMT	Growth
US-1	30,059	113,313	277%
I-295	61,948	218,993	254%
Lamberton St	5,702	11,323	99%
Lamberton Rd	6,475	12,857	99%
SR-29	12,953	25,242	95%

Source: derived from FHWA's Freight Analysis Framework.



Source: map generated from FHWA's Freight Analysis Framework.

Truck fatalities by roadway in Mercer County

Roadway	2002 deaths
New Jersey Tpke	5
US-1	1

Source: NHTSA's Fatality Analysis Reporting System.

The Trucks Are Coming to Middlesex County



1998 daily truck VMT: 1,181,905
 2020 projected daily truck VMT: 2,168,776
 Growth: 84%
 Statewide rank: 6

2003 truck fatalities: 13
 Statewide rank: 1

2020 projected truck fatalities: 21

1998 annual delay: 14
 2020 projected annual delay: 101
 Growth: 601%
 Statewide rank: 16

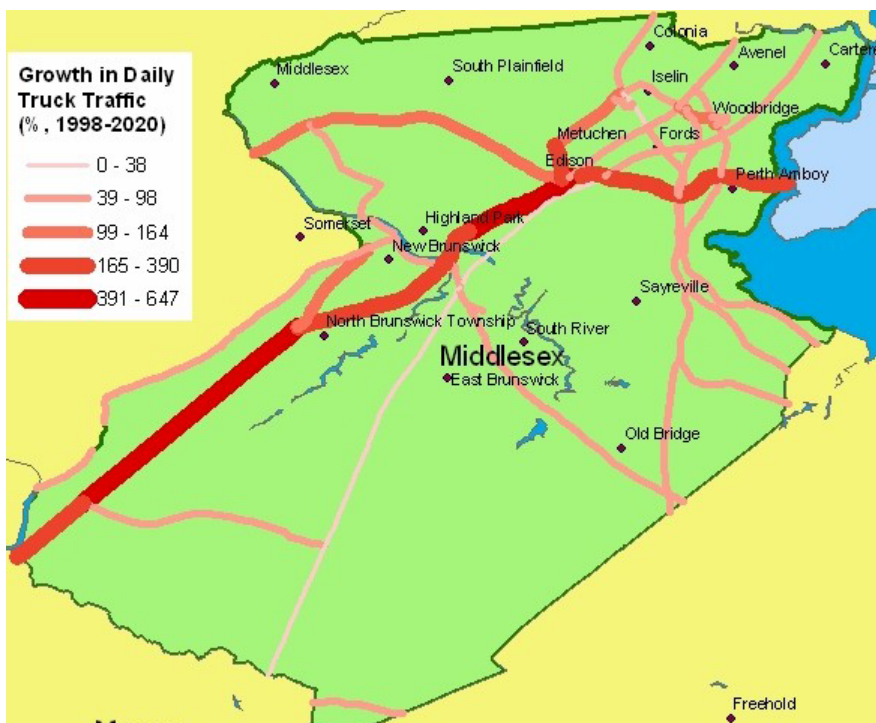
2000 days of unhealthy air: 10
 2002 days of unhealthy air: 24
 Growth: 140%
 Statewide rank: 10

Sources: VMT and annual delay figures are derived from FHWA's Freight Analysis Framework; 2002 fatalities are from NHTSA's Fatality Analysis Reporting System; 2020 fatalities are calculated using the 2002 figures and applying a growth factor based on FHWA VMT data; Air quality figures are from EPA's AirData system.

Roadways in Middlesex County projected to see the largest truck traffic growth

Roadway	1998 daily truck VMT	2020 projected daily truck VMT	Growth
US-1	87,851	369,462	321%
Outerbridge Crossing	7,439	25,657	245%
SR-440	18,874	55,997	197%
Lincoln Hwy	5,622	13,662	143%
I-287	101,592	231,589	128%

Source: derived from FHWA's Freight Analysis Framework.



Source: map generated from FHWA's Freight Analysis Framework.

Truck fatalities by roadway in Middlesex County

Roadway	2002 deaths
Blair Rd	1
CR-615	1
CR-619	1
I-287	1
New Jersey Tpke	3
Inman Ave	1
Montview Ave	1
Perrineville Rd	2
US-1	1
US-9	1

Source: NHTSA's Fatality Analysis Reporting System.

The Trucks Are Coming to Monmouth County

4th HIGHEST TRUCK DEATHS

1998 daily truck VMT: 476,637
 2020 projected daily truck VMT: 867,524
 Growth: 82%
 Statewide rank: 7

2003 truck fatalities: 8
 Statewide rank: 4
 2020 projected truck fatalities: 13

1998 annual delay: 18 hours
 2020 projected annual delay: 126 hours
 Growth: 598%
 Statewide rank: 17

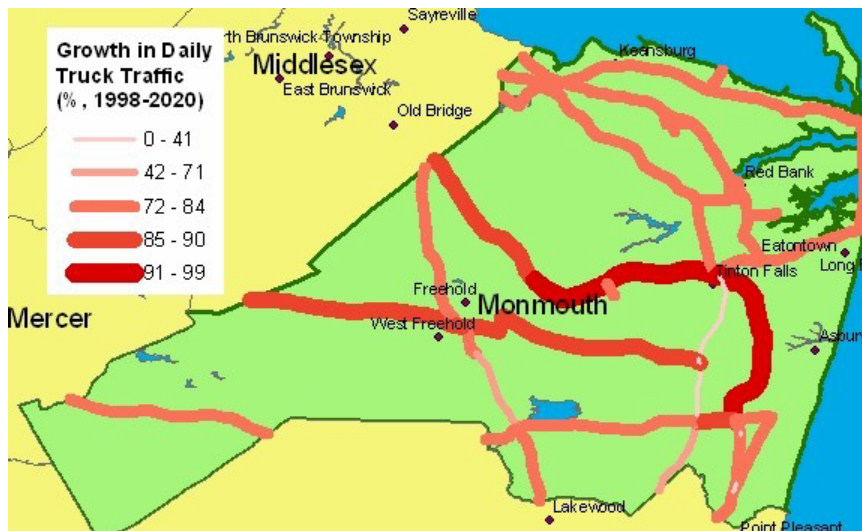
2000 days of unhealthy air: 4
 2002 days of unhealthy air: 14
 Growth: 250%
 Statewide rank: 4

Sources: VMT and annual delay figures are derived from FHWA's Freight Analysis Framework; 2002 fatalities are from NHTSA's Fatality Analysis Reporting System; 2020 fatalities are calculated using the 2002 figures and applying a growth factor based on FHWA VMT data; Air quality figures are from EPA's AirData system.

Roadways in Monmouth County projected to see the largest truck traffic growth

Roadway	1998 daily truck VMT	2020 projected daily truck VMT	Growth
SR-18	70,521	133,758	90%
SR-138	9,768	18,385	88%
SR-33 P	7,268	13,574	87%
SR-33	25,270	47,009	86%
SR-36	36,912	67,699	83%

Source: derived from FHWA's Freight Analysis Framework.



Source: map generated from FHWA's Freight Analysis Framework.

Truck fatalities by roadway in Monmouth County

Roadway	2002 deaths
CR-30	1
CR-539	2
Newtons Corner Rd	1
SR-18	1
SR-36	2
Wilson Ave	1

Source: NHTSA's Fatality Analysis Reporting System.

The Trucks Are Coming to Morris County

3rd HIGHEST AIR POLLUTION GROWTH

1998 daily truck VMT: 650,557
 2020 projected daily truck VMT: 1,174,000
 Growth: 81%
 Statewide rank: 10

2003 truck fatalities: 3
 Statewide rank: 10
 2020 projected truck fatalities: 5

1998 annual delay: 18 hours
 2020 projected annual delay: 131 hours
 Growth: 624%
 Statewide rank: 12

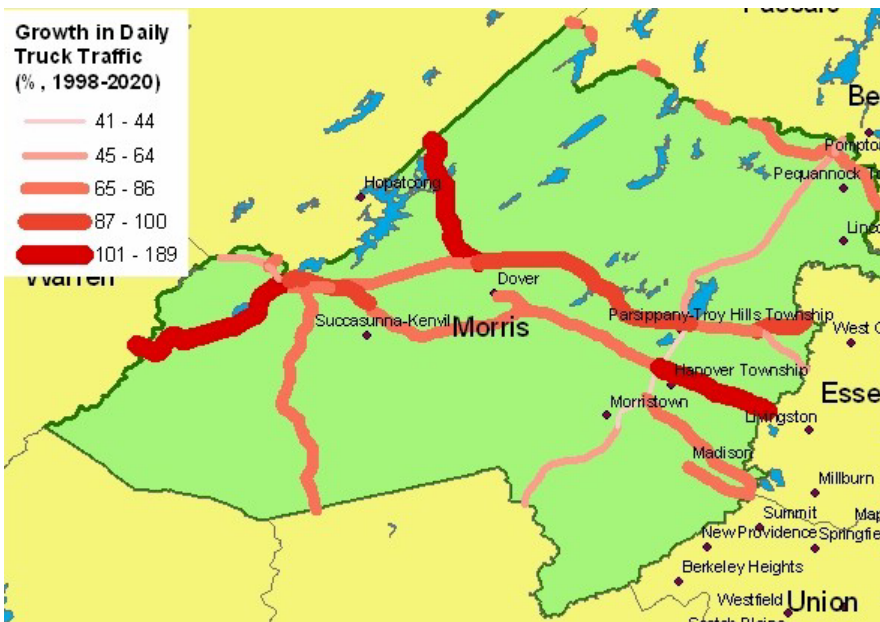
2000 days of unhealthy air: 5
 2002 days of unhealthy air: 23
 Growth: 360%
 Statewide rank: 3

Sources: VMT and annual delay figures are derived from FHWA's Freight Analysis Framework; 2002 fatalities are from NHTSA's Fatality Analysis Reporting System; 2020 fatalities are calculated using the 2002 figures and applying a growth factor based on FHWA VMT data; Air quality figures are from EPA's AirData system.

Roadways in Morris County projected to see the largest truck traffic growth

Roadway	1998 daily truck VMT	2020 projected daily truck VMT	Growth
US-46	16,609	41,692	151%
SR-15	21,079	52,735	150%
SR-10	43,682	81,911	88%
I-80	270,109	503,633	86%
US-206	22,918	42,455	85%

Source: derived from FHWA's Freight Analysis Framework.



Source: map generated from FHWA's Freight Analysis Framework.

Truck fatalities by roadway in Morris County

Roadway	2002 deaths
I-287	2
I-80	1

Source: NHTSA's Fatality Analysis Reporting System.

The Trucks Are Coming to Ocean County



1998 daily truck VMT: 178,390
 2020 projected daily truck VMT: 322,106
 Growth: 81%
 Statewide rank: 8

1998 annual delay: 5 hours
 2020 projected annual delay: 36 hours
 Growth: 608%
 Statewide rank: 14

2003 truck fatalities: 5
 Statewide rank: 7
 2020 projected truck fatalities: 8

2000 days of unhealthy air: 7
 2002 days of unhealthy air: 21
 Growth: 200%
 Statewide rank: 7

Sources: VMT and annual delay figures are derived from FHWA's Freight Analysis Framework; 2002 fatalities are from NHTSA's Fatality Analysis Reporting System; 2020 fatalities are calculated using the 2002 figures and applying a growth factor based on FHWA VMT data; Air quality figures are from EPA's AirData system.

Roadways in Ocean County projected to see the largest truck traffic growth

Roadway	1998 daily truck VMT	2020 projected daily truck VMT	Growth
SR-72	15,526	28,474	83%
I-195	33,731	61,407	82%
SR-70	37,313	67,510	81%
Garden State Pkwy	47,523	85,794	81%
SR-37	32,238	58,184	80%

Source: derived from FHWA's Freight Analysis Framework.



Truck fatalities by roadway in Ocean County

Roadway	2002 deaths
CR-526	1
CR-549	1
CR-571	1
East County Line	1
Garden State Pkwy	1

Source: NHTSA's Fatality Analysis Reporting System.

Source: map generated from FHWA's Freight Analysis Framework

The Trucks Are Coming to Passaic County

2nd HIGHEST TRUCK GROWTH

1998 daily truck VMT: 227,016
 2020 projected daily truck VMT: 437,595
 Growth: 93%
 Statewide rank: 2

2003 truck fatalities: 1
 Statewide rank: 15
 2020 projected truck fatalities: 2

1998 annual delay: 8 hours
 2020 projected annual delay: 57 hours
 Growth: 614%
 Statewide rank: 13

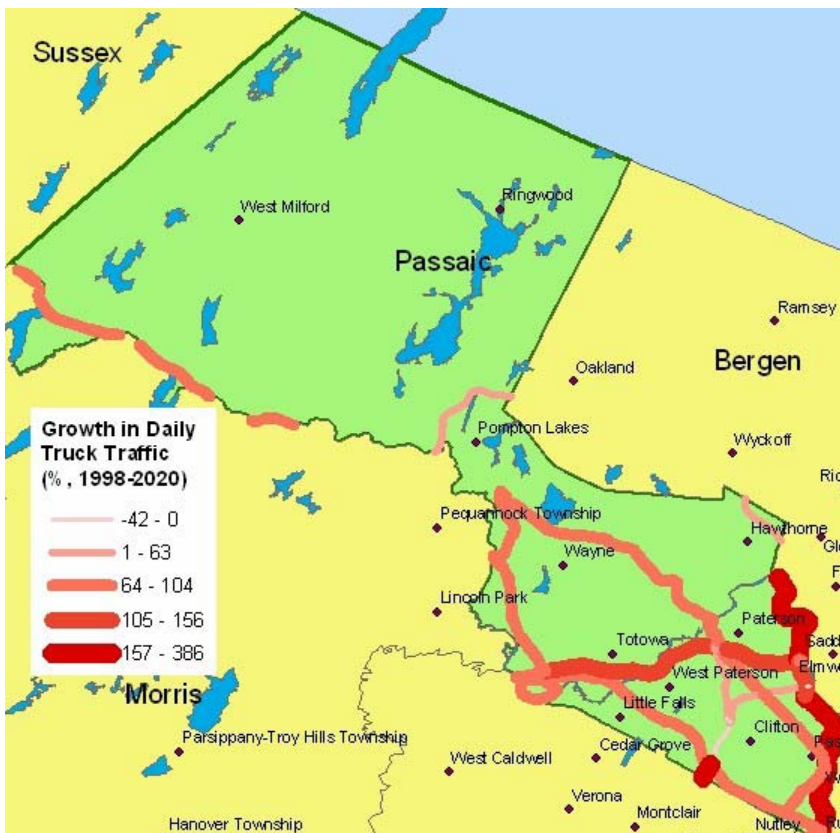
2000 days of unhealthy air: 1
 2002 days of unhealthy air: 12
 Growth: 1100%
 Statewide rank: 1

Sources: VMT and annual delay figures are derived from FHWA's Freight Analysis Framework; 2002 fatalities are from NHTSA's Fatality Analysis Reporting System; 2020 fatalities are calculated using the 2002 figures and applying a growth factor based on FHWA VMT data; Air quality figures are from EPA's AirData system.

Roadways in Passaic County projected to see the largest truck traffic growth

Roadway	1998 daily truck VMT	2020 projected daily truck VMT	Growth
SR-20	8,342	23,492	182%
SR-21	7,547	20,805	176%
I-80	51,772	111,064	115%
US-46	37,180	68,808	85%
SR-23	9,193	16,856	83%

Source: derived from FHWA's Freight Analysis Framework.



Truck fatalities by roadway in Passaic County

Roadway	2002 deaths
CR-504	1

Source: NHTSA's Fatality Analysis Reporting System.

Source: map generated from FHWA's Freight Analysis Framework

The Trucks Are Coming to Salem County

**5th HIGHEST
DELAY GROWTH**

1998 daily truck VMT: 182,212
 2020 projected daily truck VMT: 315,166
 Growth: 73%
 Statewide rank: 17

1998 annual delay: 1 hour
 2020 projected annual delay: 4 hours
 Growth: 683%
 Statewide rank: 5

2003 truck fatalities: 2
 Statewide rank: 13
 2020 projected truck fatalities: 3

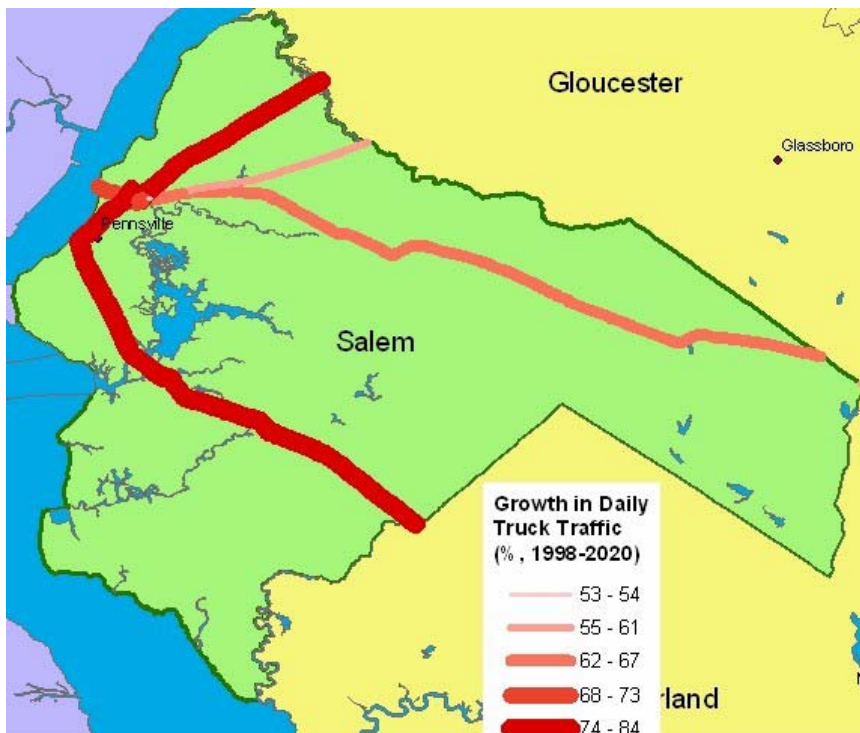
2000 days of unhealthy air: N/A
 2002 days of unhealthy air: N/A
 Growth: N/A
 Statewide rank: N/A

Sources: VMT and annual delay figures are derived from FHWA's Freight Analysis Framework; 2002 fatalities are from NHTSA's Fatality Analysis Reporting System; 2020 fatalities are calculated using the 2002 figures and applying a growth factor based on FHWA VMT data; Air quality figures are from EPA's AirData system.

Roadways in Salem County projected to see the largest truck traffic growth

Roadway	1998 daily truck VMT	2020 projected daily truck VMT	Growth
SR-49	21,569	39,556	83%
I-295	67,457	123,411	83%
Delaware Memorial Bridge	13,390	23,033	72%
US-40	35,139	58,509	67%
New Jersey Tpke	43,315	68,467	58%

Source: derived from FHWA's Freight Analysis Framework.



Source: map generated from FHWA's Freight Analysis Framework.

Truck fatalities by roadway in Salem County

Roadway	2002 deaths
I-700	2

Source: NHTSA's Fatality Analysis Reporting System.

The Trucks Are Coming to Somerset County

5th HIGHEST TRUCK DEATHS

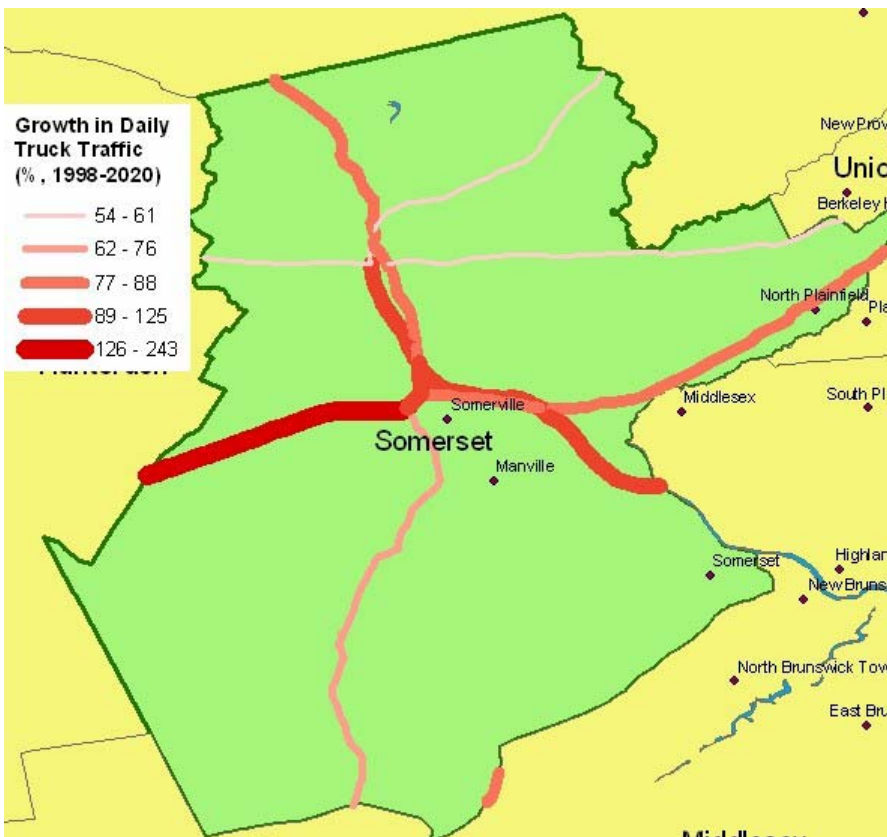
1998 daily truck VMT: 474,182	2003 truck fatalities: 6
2020 projected daily truck VMT: 854,711	Statewide rank: 5
Growth: 80%	2020 projected truck fatalities: 10
Statewide rank: 11	
1998 annual delay: 11 hours	2000 days of unhealthy air: N/A
2020 projected annual delay: 79 hours	2002 days of unhealthy air: N/A
Growth: 643%	Growth: N/A
Statewide rank: 11	Statewide rank: N/A

Sources: VMT and annual delay figures are derived from FHWA's Freight Analysis Framework; 2002 fatalities are from NHTSA's Fatality Analysis Reporting System; 2020 fatalities are calculated using the 2002 figures and applying a growth factor based on FHWA VMT data; Air quality figures are from EPA's AirData system.

Roadways in Somerset County projected to see the largest truck traffic growth

Roadway	1998 daily truck VMT	2020 projected daily truck VMT	Growth
US-202	29,474	65,544	122%
I-287	199,100	376,219	89%
US-22	53,678	100,571	87%
US-206	37,403	66,432	78%
I-78	153,791	244,585	59%

Source: derived from FHWA's Freight Analysis Framework.



Truck fatalities by roadway in Somerset County

Roadway	2002 deaths
I-287	4
US-22	1
Watchung Ave	1

Source: NHTSA's Fatality Analysis Reporting System.

Source: map generated from FHWA's Freight Analysis Framework.

The Trucks Are Coming to Sussex County

HIGHEST DELAY & TRUCK GROWTH

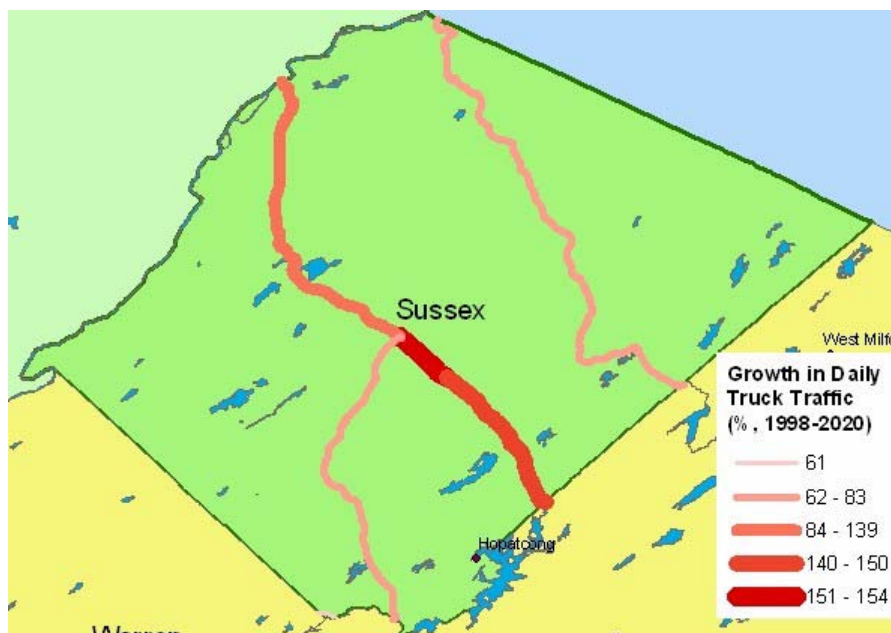
1998 daily truck VMT: 227,224	2003 truck fatalities: 0
2020 projected daily truck VMT: 469,202	Statewide rank: 18
Growth: 107%	2020 projected truck fatalities: 0
Statewide rank: 1	
1998 annual delay: 117 hours	2000 days of unhealthy air: N/A
2020 projected annual delay: 1,696 hours	2002 days of unhealthy air: N/A
Growth: 1354%	Growth: N/A
Statewide rank: 1	Statewide rank: N/A

Sources: VMT and annual delay figures are derived from FHWA's Freight Analysis Framework; 2002 fatalities are from NHTSA's Fatality Analysis Reporting System; 2020 fatalities are calculated using the 2002 figures and applying a growth factor based on FHWA VMT data; Air quality figures are from EPA's AirData system.

Roadways in Sussex County projected to see the largest truck traffic growth

Roadway	1998 daily truck VMT	2020 projected daily truck VMT	Growth
SR-15 F	5,715	14,488	153%
SR-15	25,958	65,021	150%
US-206	96,193	208,919	117%
SR-23	92,819	170,223	83%
I-80	6,480	10,402	61%

Source: derived from FHWA's Freight Analysis Framework.



Source: map generated from FHWA's Freight Analysis Framework.

The Trucks Are Coming to Union County

10th HIGHEST TRUCK DEATHS

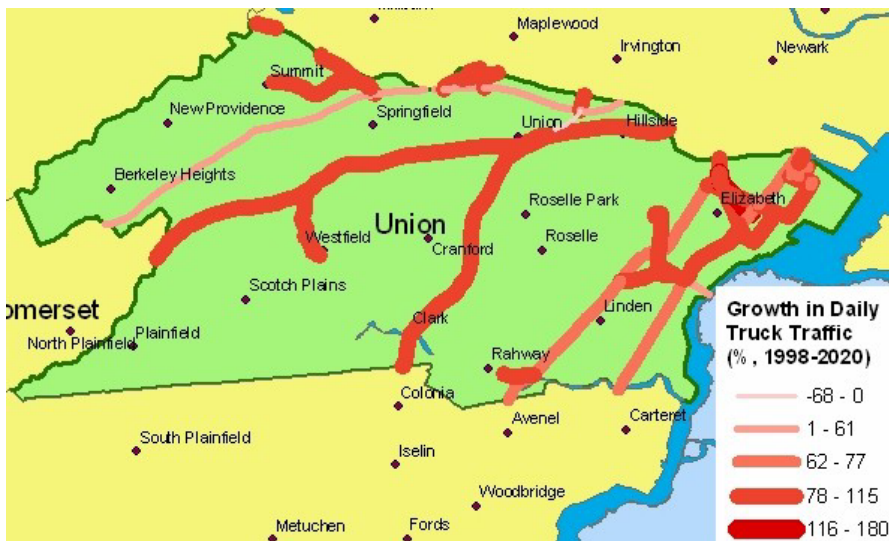
1998 daily truck VMT: 493,893	2003 truck fatalities: 3
2020 projected daily truck VMT: 849,460	Statewide rank: 10
Growth: 72%	2020 projected truck fatalities: 5
Statewide rank: 18	
1998 annual delay: 169 hours	2000 days of unhealthy air: 8
2020 projected annual delay: 1,110 hours	2002 days of unhealthy air: 11
Growth: 556%	Growth: 38%
Statewide rank: 20	Statewide rank: 14

Sources: VMT and annual delay figures are derived from FHWA's Freight Analysis Framework; 2002 fatalities are from NHTSA's Fatality Analysis Reporting System; 2020 fatalities are calculated using the 2002 figures and applying a growth factor based on FHWA VMT data; Air quality figures are from EPA's AirData system.

Roadways in Union County projected to see the largest truck traffic growth

Roadway	1998 daily truck VMT	2020 projected daily truck VMT	Growth
US-22	63,327	117,156	85%
SR-24	6,263	11,450	83%
SR-124	6,230	11,383	83%
Garden State Pkwy	12,379	21,734	76%
Edgar Rd	28,273	48,560	72%

Source: derived from FHWA's Freight Analysis Framework.



Source: map generated from FHWA's Freight Analysis Framework.

Truck fatalities by roadway in Union County

Roadway	2002 deaths
North Ave	1
Springfield Ave	1
SR-82	1

Source: NHTSA's Fatality Analysis Reporting System.

The Trucks Are Coming to Warren County

2nd HIGHEST DELAY GROWTH

1998 daily truck VMT: 316,255
 2020 projected daily truck VMT: 570,872
 Growth: 81%
 Statewide rank: 9

1998 annual delay: 2 hours
 2020 projected annual delay: 18 hours
 Growth: 727%
 Statewide rank: 2

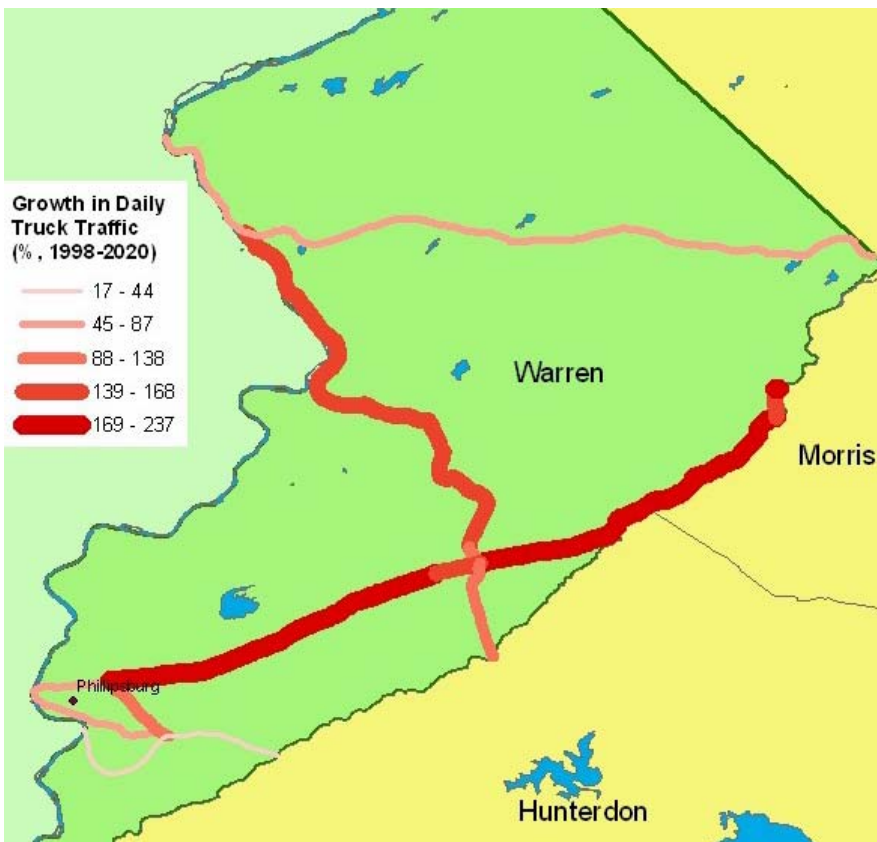
2003 truck fatalities: 2
 Statewide rank: 13
 2020 projected truck fatalities: 3
 2000 days of unhealthy air: 2
 2002 days of unhealthy air: 1
 Growth: -50%
 Statewide rank: 21

Sources: VMT and annual delay figures are derived from FHWA's Freight Analysis Framework; 2002 fatalities are from NHTSA's Fatality Analysis Reporting System; 2020 fatalities are calculated using the 2002 figures and applying a growth factor based on FHWA VMT data; Air quality figures are from EPA's AirData system.

Roadways in Warren County projected to see the largest truck traffic growth

Roadway	1998 daily truck VMT	2020 projected daily truck VMT	Growth
SR-57	31,048	87,826	183%
US-46	12,050	30,539	153%
SR-31	16,817	38,591	129%
US-22	13,614	28,991	113%
I-80	195,005	316,643	62%

Source: derived from FHWA's Freight Analysis Framework.



Truck fatalities by roadway in Warren County

Roadway	2002 deaths
CR-519	1
I-80	1

Source: NHTSA's Fatality Analysis Reporting System.

Source: map generated from FHWA's Freight Analysis Framework.