

Camden County's Most Dangerous Roads

23 pedestrians were killed on Camden County streets in the three years from 2005 through 2007. Tri-State Transportation Campaign's analysis of federal traffic fatality data reveal that Route 168 (Black Horse Pike, Mount Ephraim Ave) suffered the highest number of pedestrian deaths over the period.

Annual County-wide Pedestrian Fatalities

<u>2005</u>	<u>2006</u>	<u>2007</u>	<u>Total</u>
4	8	11	23

Most Dangerous Roads

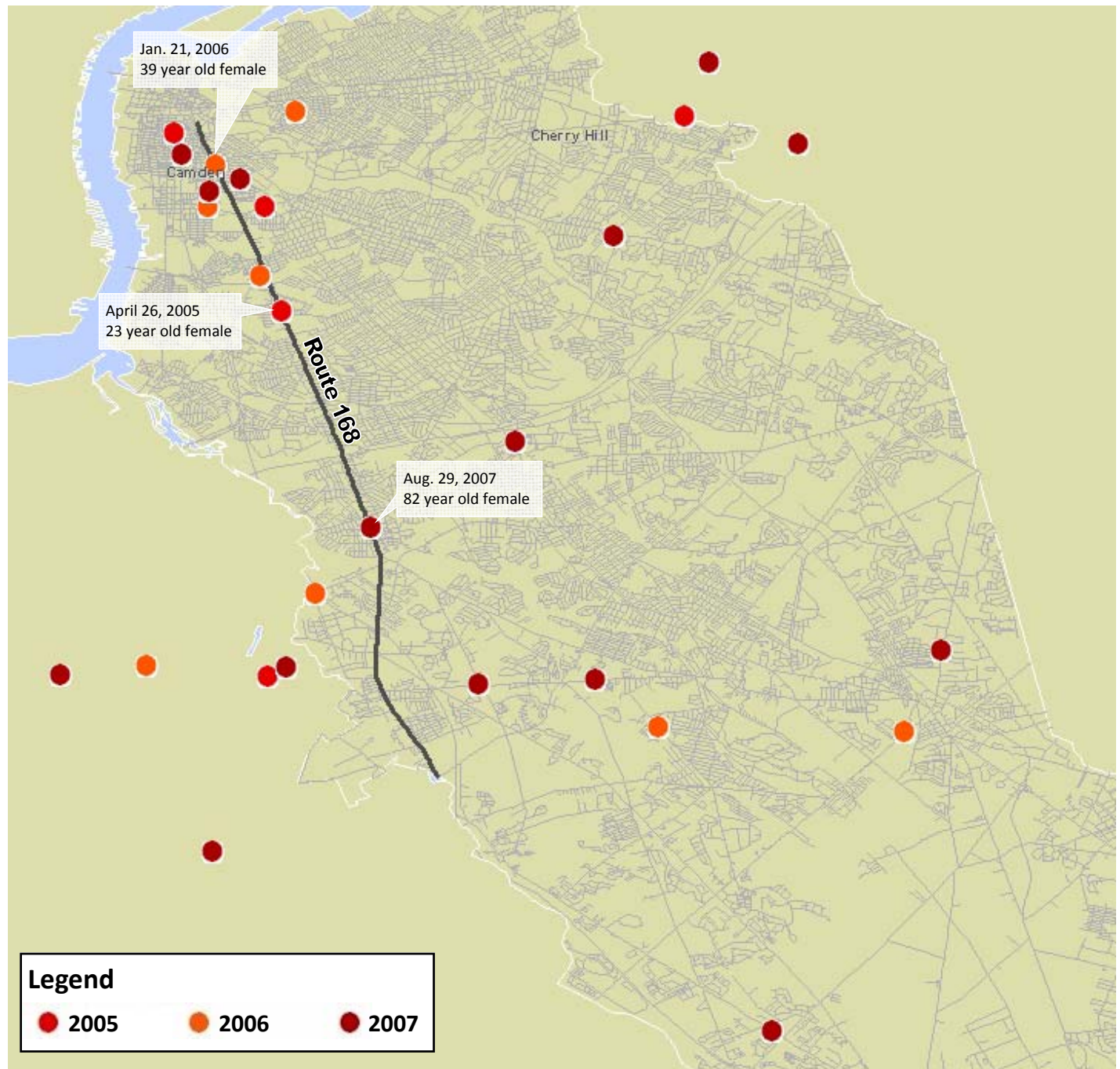
<u>Road</u>	<u>2005</u>	<u>2006</u>	<u>2007</u>	<u>Total</u>
BLACK HORSE PIKE, MOUNT EPHRAIM AVE (Route 168)	1	1	1	3

Data source: TSTC analysis of National Highway Traffic Safety Administration's Fatality Analysis Reporting System, years 2005, 2006 and 2007.

Note: Analysis of most dangerous roads excludes Interstates, highways and other roads where pedestrians are prohibited.

Location of Pedestrian Fatalities by Year

With details for pedestrian fatalities on most dangerous roads



Data source: TSTC analysis of National Highway Traffic Safety Administration's Fatality Analysis Reporting System, years 2005, 2006 and 2007.

Note: Analysis of most dangerous roads excludes Interstates, highways and other roads where pedestrians are prohibited.

TRI-STATE TRANSPORTATION CAMPAIGN



For more information, contact Zoe Baldwin at 212.268.7474 or zoe@tstc.org

The Tri-State Transportation Campaign is a non-profit organization working toward a more balanced, transit-friendly and equitable transportation system in New York, New Jersey and Connecticut. www.tstc.org